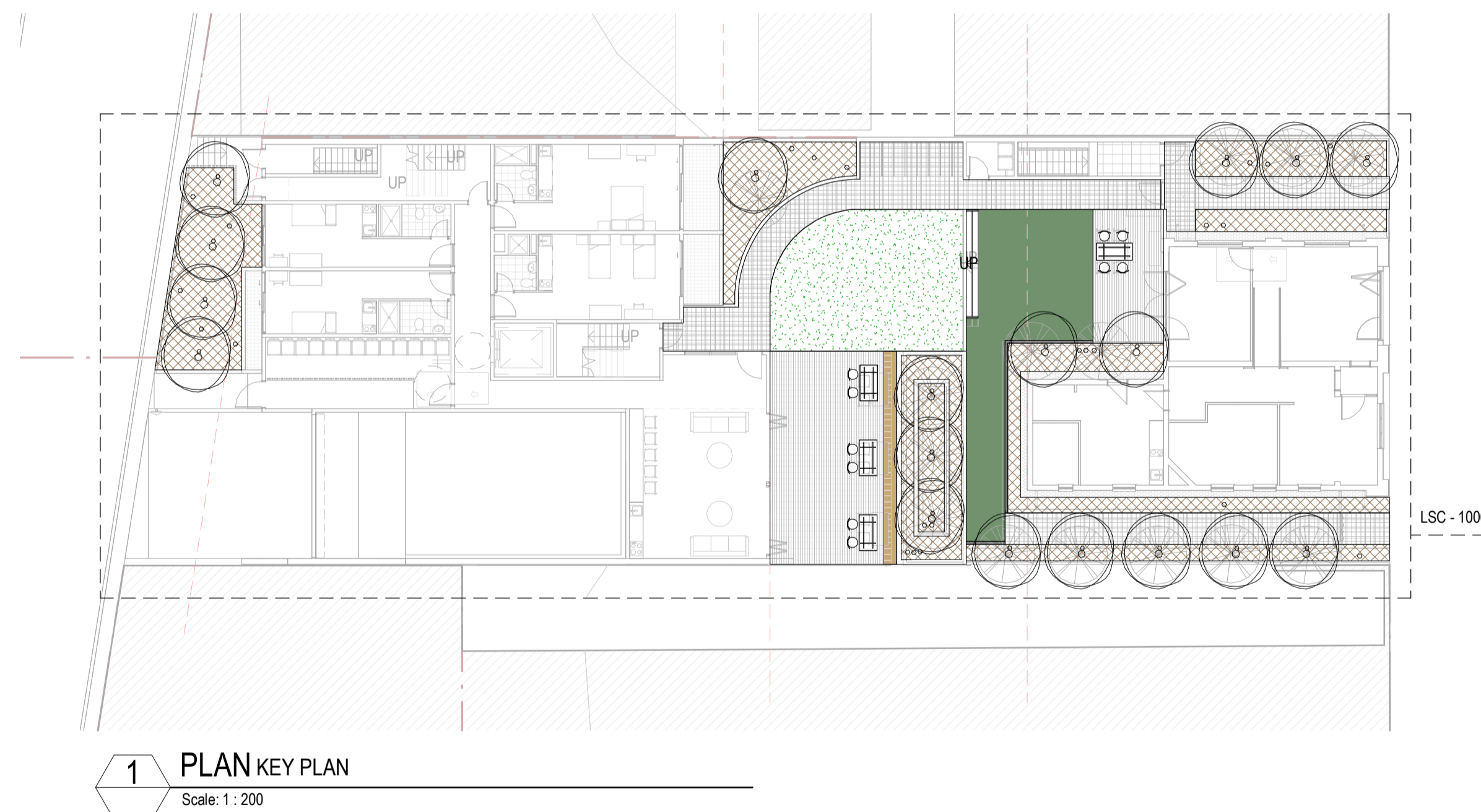


3 WILLIAM ST FAIRFIELD LANDSCAPE WORKS DEVELOPMENT APPLICATION

| No. | Name |
|------|-------------------------------|
| 0000 | LANDSCAPE COVERSHEET |
| 1000 | LANDSCAPE PLAN - GROUND LEVEL |
| 1001 | LANDSCAPE PLAN - LEVEL 1 |
| 4000 | PLANTING PLAN - GROUND LEVEL |
| 4001 | PLANTING PLAN - LEVEL 1 |
| 9000 | LANDSCAPE DETAILS SHEET 1 |
| 9001 | LANDSCAPE DETAILS SHEET 2 |
| 9002 | LANDSCAPE SPECIFICATION |

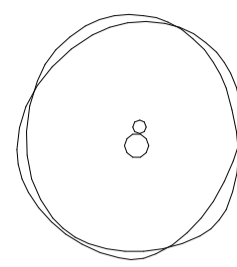


- These designs and plans are the copyright of MODE DESIGN Corp. Pty Ltd and cannot be reproduced without written permission.
- Verify all dimensions on site prior to commencement of work.
- DO NOT scale off these drawings.
- Report any discrepancies to the architect before carrying out any work.

| AMENDMENTS | | | | |
|------------|-----------------------|------|-----|------------|
| REV | DESCRIPTION | AUTH | CHK | DATE |
| 1 | FOR REVIEW | DB | LC | 27/07/2018 |
| 2 | DA SUBMISSION | DB | LC | 06/08/2018 |
| 3 | REVISED DA SUBMISSION | DB | LC | 15/04/2019 |
| 4 | REVISED DA SUBMISSION | GH | SC | 11/12/2019 |
| | | | | |
| | | | | |

| | | | |
|---|-------|---|----------|
| ISSUE DA SUBMISSION | | NORTH  | |
|  | | BRISBANE Plaza Level, Mosaic 625 Ann St Fortitude Valley QLD 4006 T +61 7 3253 9900 bne@modedesign.com.au ABN: 65 112 807 931 | |
| CLIENT H&F Building Pty Ltd | | | |
| PROJECT Fire Station Boarding House | | | |
| 3 William Street, Fairfield, 2165 NSW | | | |
| DRAWING TITLE LANDSCAPE COVERSHEET | | | |
| DRAWN GH | | CHECKED DB | |
| ISSUE 20/12/2019 10:58:41 AM | | SCALE @ A1 1 : 200 | |
| PROJECT No | STAGE | DRAWING No | REVISION |
| 17411 | DA | LSC- 0000 | 4 |

LANDSCAPE LEGEND

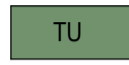


PROPOSED TREE



GARDEN BED

All Garden Beds to be irrigated with automated irrigation systems with rain systems and soil moisture readers. Refer to typical details and specification



TURF

Refer to typical details and specification.



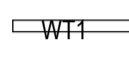
ARTIFICIAL TURF

Refer to typical details and specification.

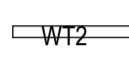


CONCRETE EDGE

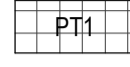
Refer to typical details and specification.



600MM HIGH CONCRETE WALL



1000MM HIGH CONCRETE WALL



DECORATIVE TILE

Refer to typical details and specification.



DECKING SYSTEM

Refer to typical details and specification.



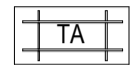
TIMBER SEAT

Fixed timber seat



STOOL

Moveable metal stool.



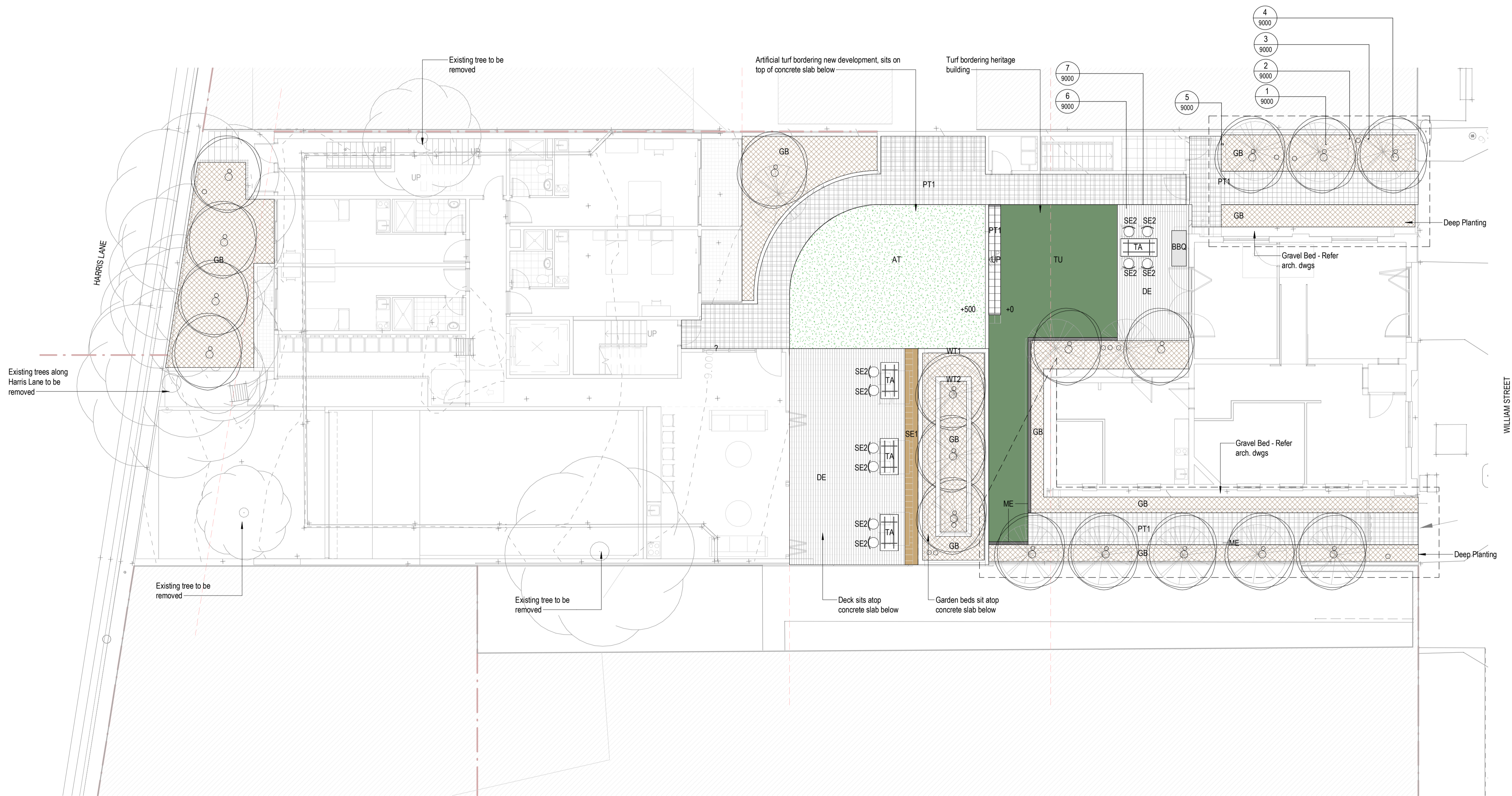
TABLE

Moveable timber table. 1525mm x 750mm



BARBEQUE

Electric moveable BBQ



NOTE: For levels
refer to arch. dwgs

- These designs and plans are the copyright of MODE DESIGN Corp. Pty Ltd and cannot be reproduced without written permission.
- Verify all dimensions on site prior to commencement of work.
- DO NOT scale off these drawings.
- Report any discrepancies to the architect before carrying out any work.

| AMENDMENTS | | | | |
|------------|-----------------------|------|-----|------------|
| REV | DESCRIPTION | AUTH | CHK | DATE |
| 1 | FOR REVIEW | DB | LC | 27/07/2018 |
| 2 | DA SUBMISSION | DB | LC | 06/08/2018 |
| 3 | REVISED DA SUBMISSION | DB | LC | 15/04/2019 |
| 4 | REVISED DA SUBMISSION | GH | SC | 11/12/2019 |
| | | | | |
| | | | | |

| | |
|---------------|-------|
| ISSUE | NORTH |
| DA SUBMISSION | |
| 0 1 2 3 4 5 | |

mode **BRISBANE**
Plaza Level, Mosaic
826 Ann St
Fortitude Valley QLD 4006
T +61 7 3253 9900
bne@modedesign.com.au
ABN: 65 112 807 931

CLIENT
H&F Building Pty Ltd

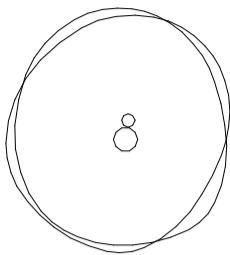
PROJECT
Fire Station Boarding House

3 William Street, Fairfield, 2165 NSW

DRAWING TITLE
**LANDSCAPE PLAN -
GROUND LEVEL**

| | |
|---------------------------------|----------------------|
| DRAWN GH | CHECKED DB |
| ISSUE 20/12/2019 10:58:42 AM | SCALE @ A1 1: 100 |
| PROJECT No 17411 | STAGE DA |
| DRAWING No LSC- | REVISION 1000 4 |

LANDSCAPE LEGEND

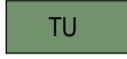


PROPOSED TREE



GARDEN BED

All Garden Beds to be irrigated with automated irrigation systems with rain systems and soil moisture readers. Refer to typical details and specification



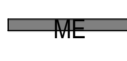
TURF

Refer to typical details and specification.



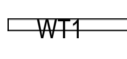
ARTIFICIAL TURF

Refer to typical details and specification.

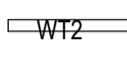


CONCRETE EDGE

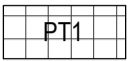
Refer to typical details and specification.



600MM HIGH CONCRETE WALL



1000MM HIGH CONCRETE WALL



DECORATIVE TILE

Refer to typical details and specification.



DECKING SYSTEM

Refer to typical details and specification.



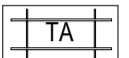
TIMBER SEAT

Fixed timber seat



STOOL

Moveable metal stool.



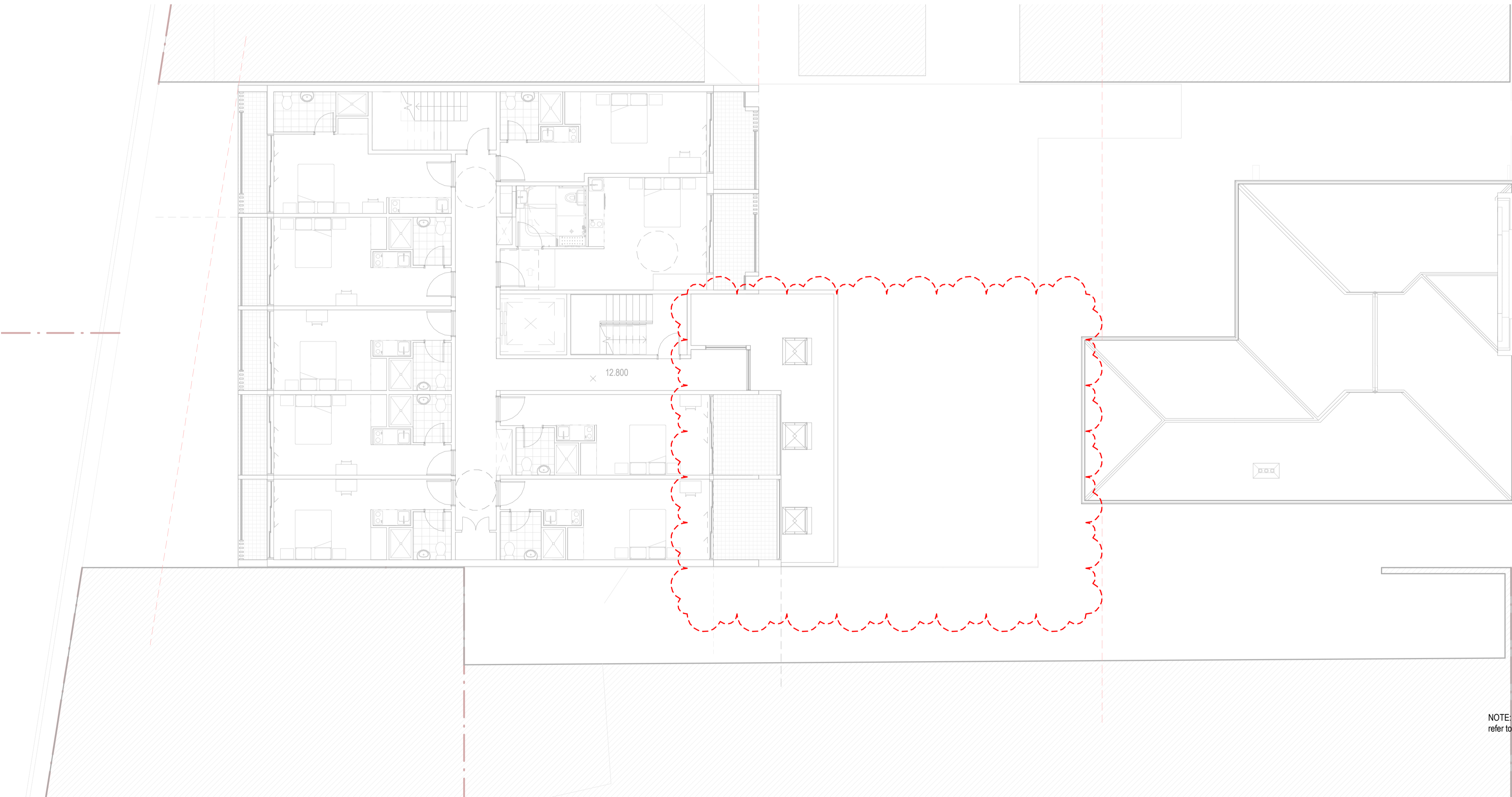
TABLE

Moveable timber table. 1525mm x 760mm



BARBEQUE

Electric moveable BBQ



WILLIAM STREET

- These designs and plans are the copyright of MODE DESIGN Corp. Pty Ltd and cannot be reproduced without written permission.
- Verify all dimensions on site prior to commencement of work.
- DO NOT scale off these drawings.
- Report any discrepancies to the architect before carrying out any work.

| AMENDMENTS | | | | |
|------------|-----------------------|------|-----|------------|
| REV | DESCRIPTION | AUTH | CHK | DATE |
| 1 | FOR REVIEW | DB | LC | 27/07/2018 |
| 2 | DA SUBMISSION | DB | LC | 06/08/2018 |
| 3 | REVISED DA SUBMISSION | DB | LC | 15/04/2019 |
| 4 | REVISED DA SUBMISSION | GH | SC | 11/12/2019 |
| | | | | |
| | | | | |
| | | | | |

ISSUE
DA SUBMISSION

0 1 2 3 4 5

NORTH

 **BRISBANE**
Plaza Level, Mosaic
826 Ann St
Fortitude Valley QLD 4006
T +61 7 3253 9900
bne@modedesign.com.au
ABN: 65 112 807 931

CLIENT
H&F Building Pty Ltd

PROJECT
Fire Station Boarding House

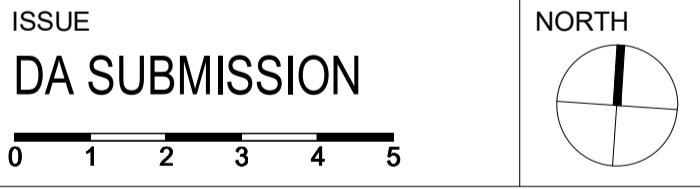
3 William Street, Fairfield, 2165 NSW

DRAWING TITLE
LANDSCAPE PLAN - LEVEL 1

| | | | |
|---------------------------------|-------------|-------------------------|---------------|
| DRAWN GH | | CHECKED DB | |
| ISSUE 20/12/2019 10:58:42 AM | | SCALE @ A1 1: 100 | |
| PROJECT No 17411 | STAGE DA | DRAWING No LSC- 1001 | REVISION 4 |

- | AMENDMENTS | | | | |
|------------|-----------------------|------|-----|------------|
| REV | DESCRIPTION | AUTH | CHK | DATE |
| 1 | FOR REVIEW | DB | LC | 27/07/2018 |
| 2 | DA SUBMISSION | DB | LC | 06/08/2018 |
| 3 | REVISED DA SUBMISSION | DB | LC | 15/04/2019 |
| 4 | REVISED DA SUBMISSION | GH | SC | 11/12/2019 |
| | | | | |
| | | | | |
| | | | | |

| | | | | | |
|--------------|---------------------------|-----------------|---------|-------------|----|
| Tree | | | | | |
| MAG gra | MAGNOLIA grandiflora | Teddy Bear | 45 Ltr | 2500x1200mm | 14 |
| OLE eur | OLEA europaea | Olive | 100 Ltr | 2500x1200mm | 4 |
| GROUND COVER | | | | | |
| DIC sil | DICHONDRA 'Silver Falls' | Silver Falls | 140mm | 200x2000mm | 9 |
| KAL cop | KALANCHOE 'Copper Spoons' | Copper Spoons | 200mm | 1800x800mm | 9 |
| LIR eve | LIRIOPE 'Evergreen Giant' | Evergreen Giant | 140mm | 200x200mm | 64 |
| PIR mis | PITTOSPORA 'Miss Muffet' | Miss Muffet | 200mm | 1000x1500mm | 23 |
| RHA sno | RHAPHIOLEPI 'Snow Maiden' | Snow Maiden | 200mm | 1000x1000mm | 17 |
| VIB den | VIBURNUM 'Dense Fence' | Dense Fence | 200mm | 2500x2000mm | 29 |
| VIO hed | VIOLA hederacea | Native Violet | 140mm | 200x200mm | 30 |



CLIENT
H&F Building Pty Ltd

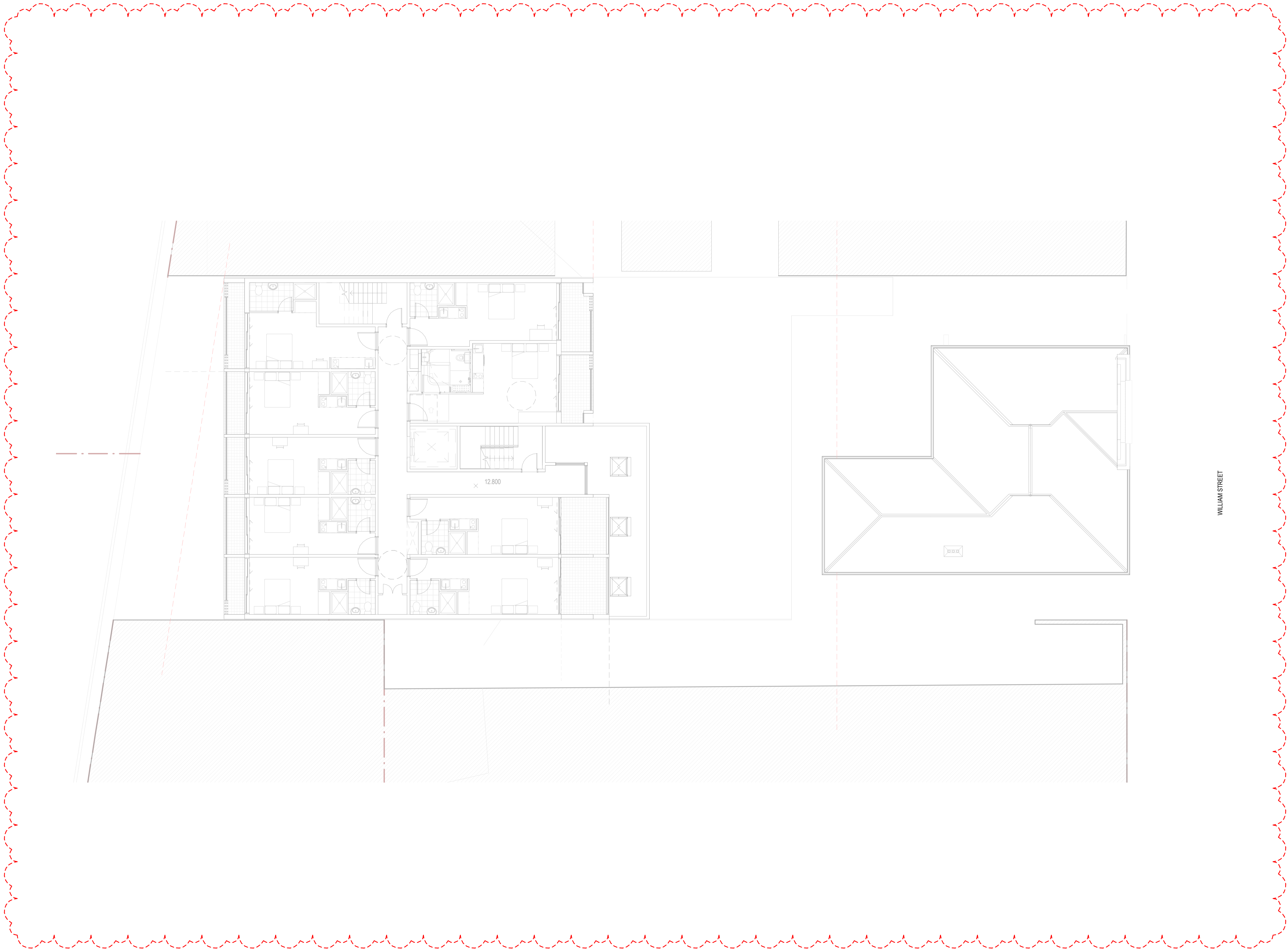
PROJECT
Fire Station Boarding House

3 William Street, Fairfield, 2165 NSW

DRAWING TITLE

PLANTING PLAN - GROUND
LEVEL

| | | | |
|---------------------------------|-------|-----------------------|----------|
| DRAWN GH | | CHECKED DB | |
| ISSUE 20/12/2019 10:58:42 AM | | SCALE @ A1 1 : 100 | |
| PROJECT No | STAGE | DRAWING No | REVISION |
| 17411 | DA | LSC- 4000 | 4 |



- These designs and plans are the copyright of MODE DESIGN Corp. Pty Ltd and cannot be reproduced without written permission.
- Verify all dimensions on site prior to commencement of work.
- DO NOT scale off these drawings.
- Report any discrepancies to the architect before carrying out any work.

| AMENDMENTS | | | | |
|------------|-----------------------|------|-----|------------|
| REV | DESCRIPTION | AUTH | CHK | DATE |
| 1 | FOR REVIEW | DB | LC | 27/07/2018 |
| 2 | DA SUBMISSION | DB | LC | 06/08/2018 |
| 3 | REVISED DA SUBMISSION | DB | LC | 15/04/2019 |
| 4 | REVISED DA SUBMISSION | GH | SC | 11/12/2019 |
| | | | | |
| | | | | |
| | | | | |

ISSUE
DA SUBMISSION

0 1 2 3 4 5

NORTH

BRISBANE
Plaza Level, Mosaic
826 Ann St
Fortitude Valley QLD 4006
T +61 7 3253 9900
bne@modedesign.com.au
ABN: 65 112 807 931

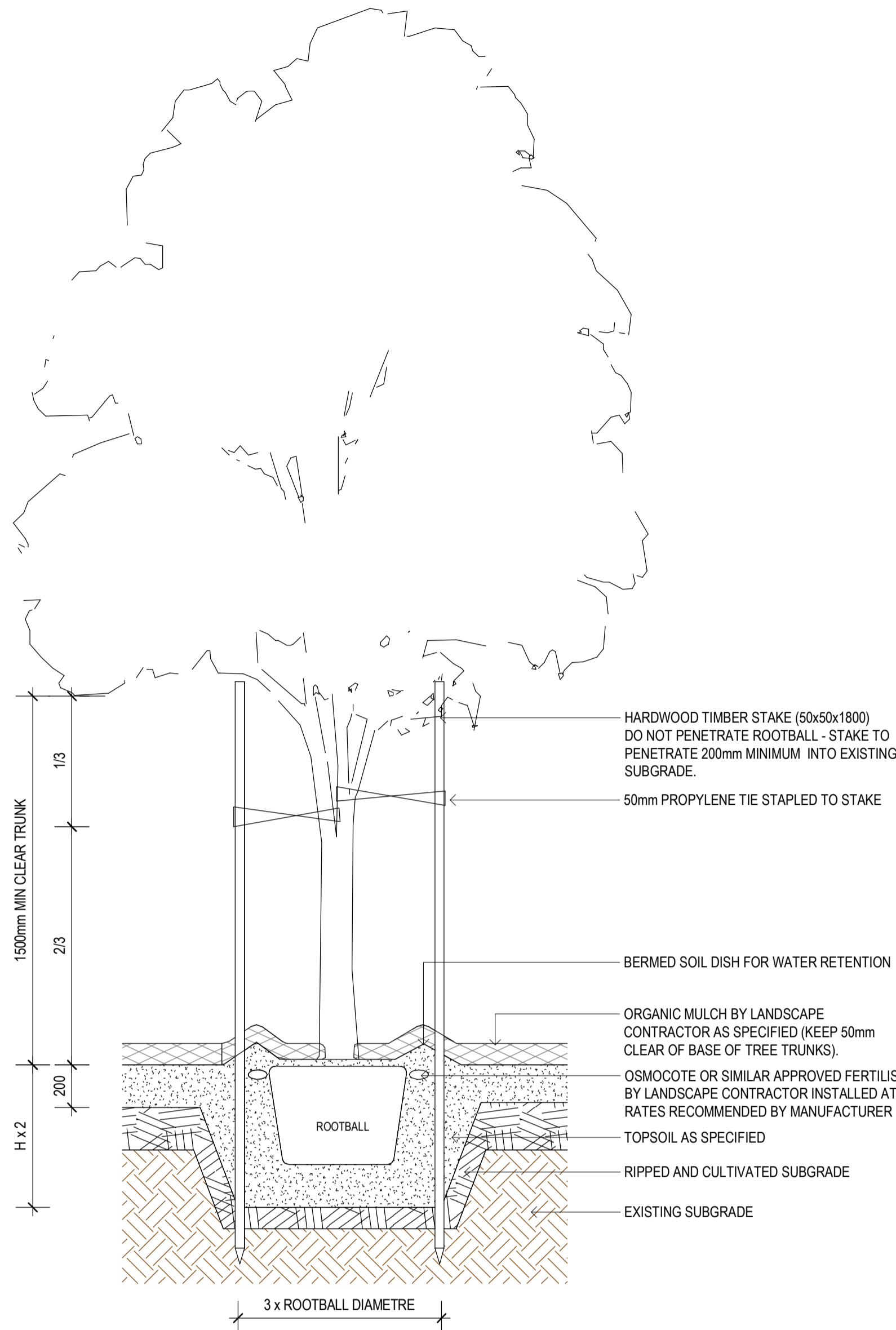
CLIENT
H&F Building Pty Ltd

PROJECT
Fire Station Boarding House

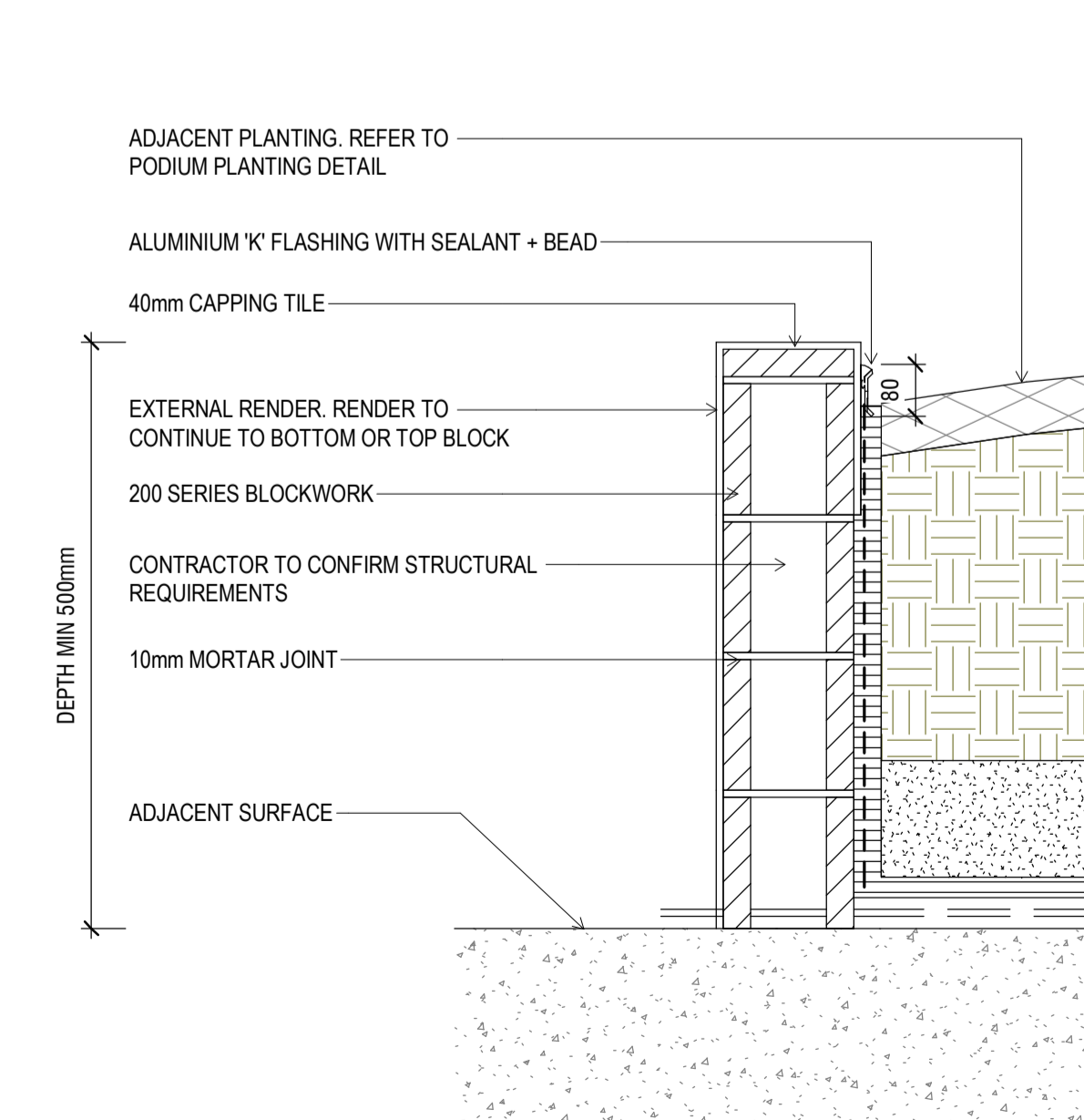
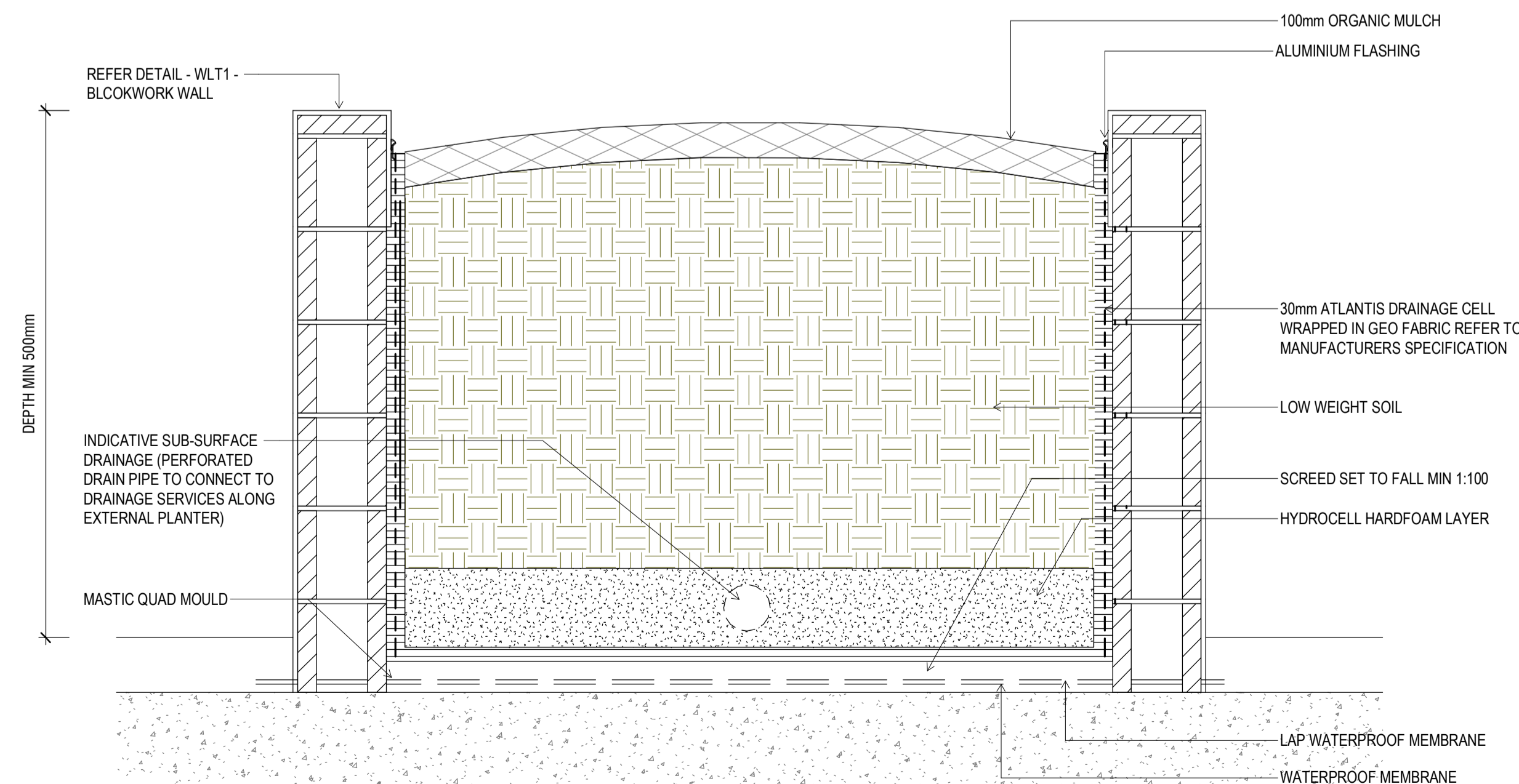
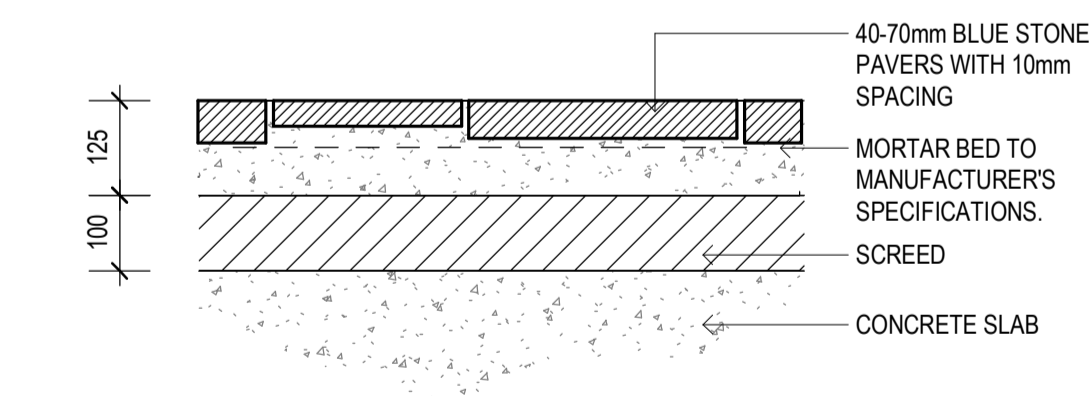
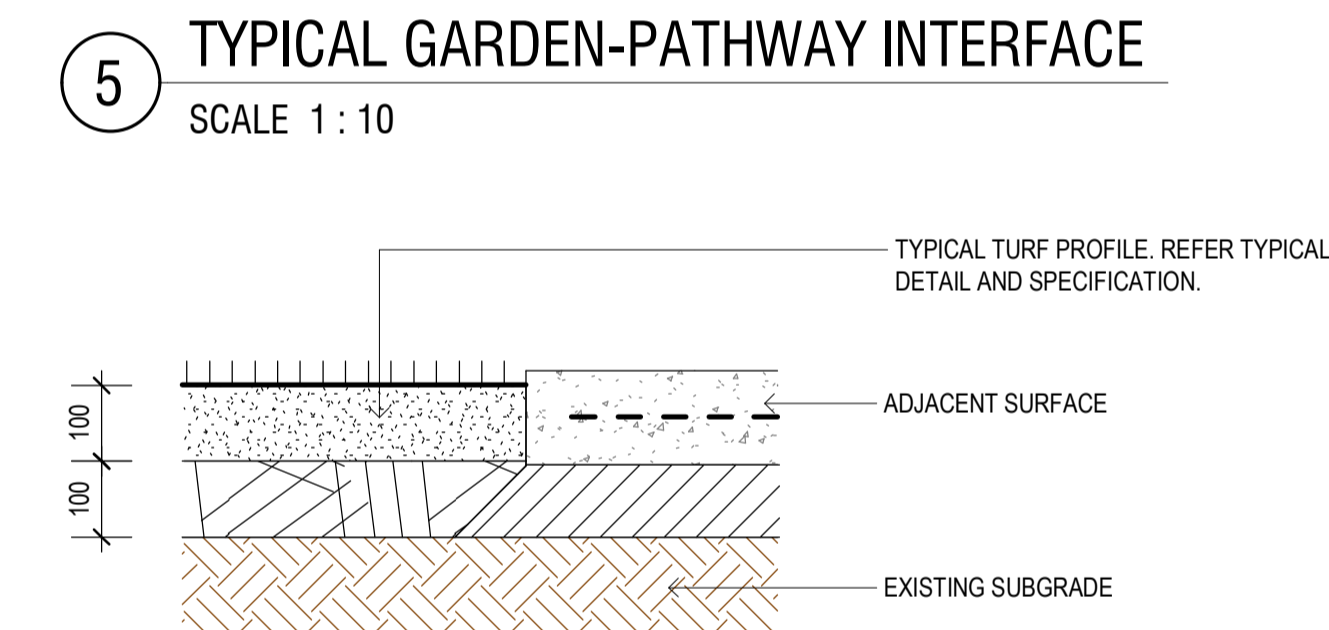
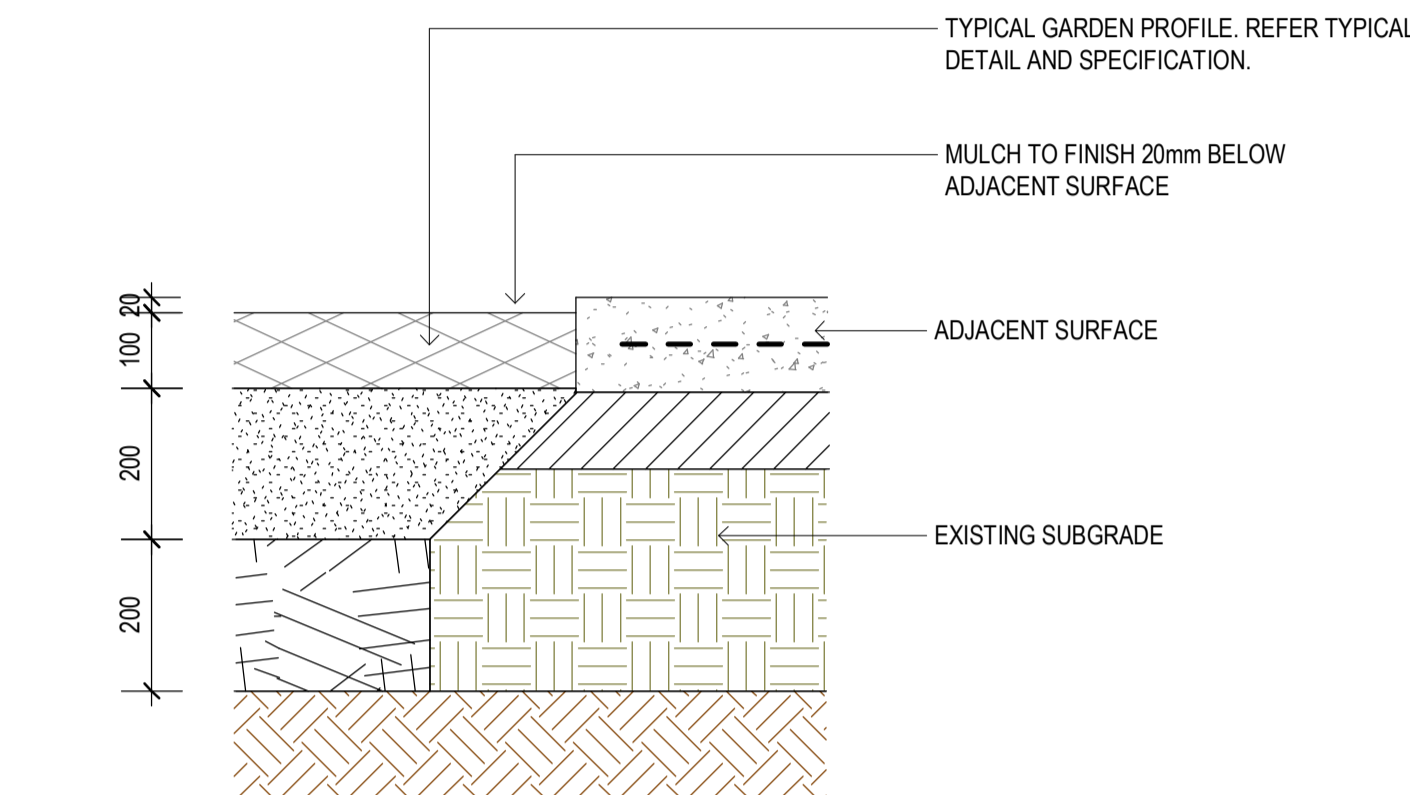
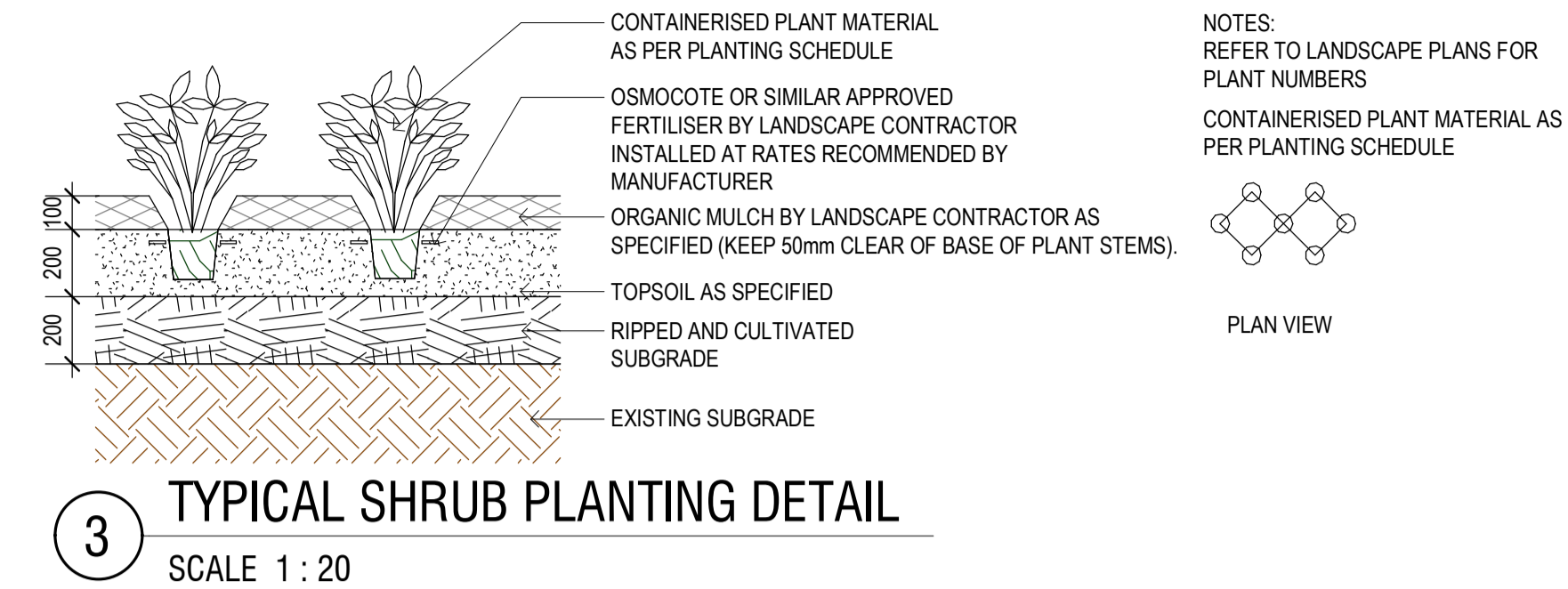
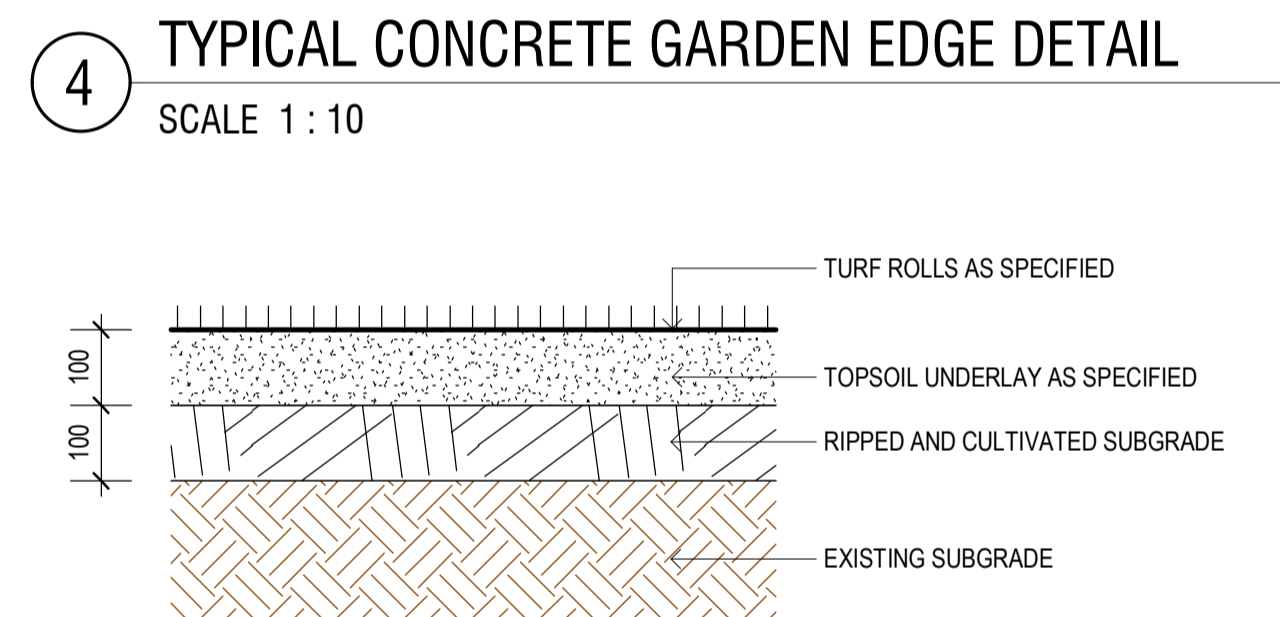
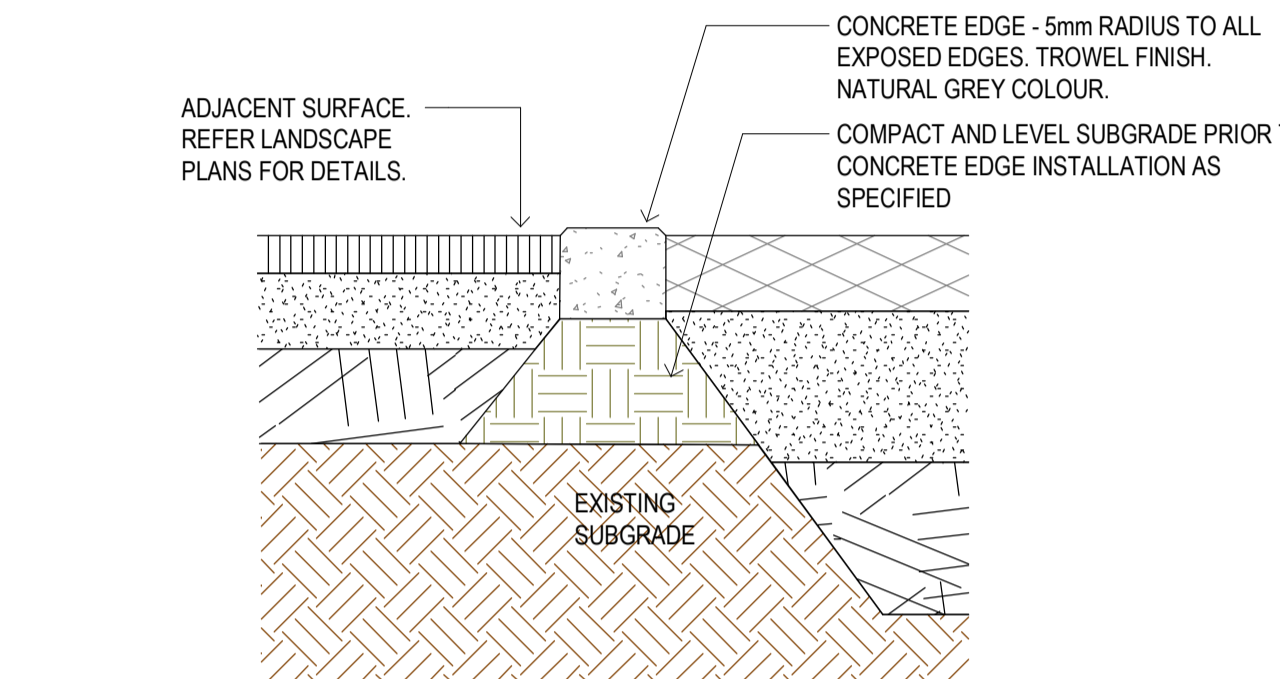
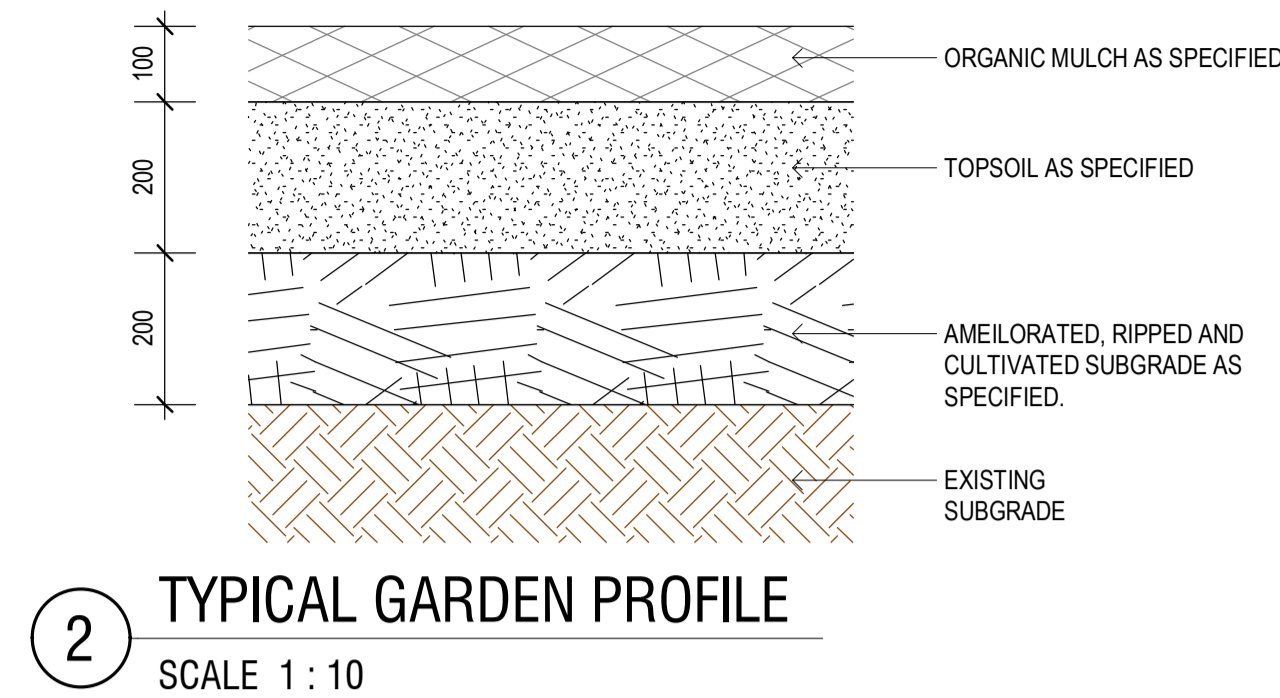
3 William Street, Fairfield, 2165 NSW

DRAWING TITLE
PLANTING PLAN - LEVEL 1

| | | | |
|---------------------------------|-------|----------------------|----------|
| DRAWN GH | | CHECKED DB | |
| ISSUE 20/12/2019 10:58:43 AM | | SCALE @ A1 1: 100 | |
| PROJECT No | STAGE | DRAWING No | REVISION |
| 17411 | DA | LSC- 4001 | 4 |



1 TREE PLANTING TO GARDEN DETAIL
SCALE 1 : 20



- These designs and plans are the copyright of MODE DESIGN Corp. Pty Ltd and cannot be reproduced without written permission.
- Verify all dimensions on site prior to commencement of work.
- DO NOT scale off these drawings.
- Report any discrepancies to the architect before carrying out any work.

| AMENDMENTS | | | | |
|------------|-----------------------|------|-----|------------|
| REV | DESCRIPTION | AUTH | CHK | DATE |
| 1 | FOR REVIEW | DB | LC | 27/07/2018 |
| 2 | DA SUBMISSION | DB | LC | 06/08/2018 |
| 3 | REVISED DA SUBMISSION | DB | LC | 15/04/2019 |
| 4 | REVISED DA SUBMISSION | GH | SC | 11/12/2019 |
| | | | | |
| | | | | |

| | |
|---------------|-------|
| ISSUE | NORTH |
| DA SUBMISSION | |

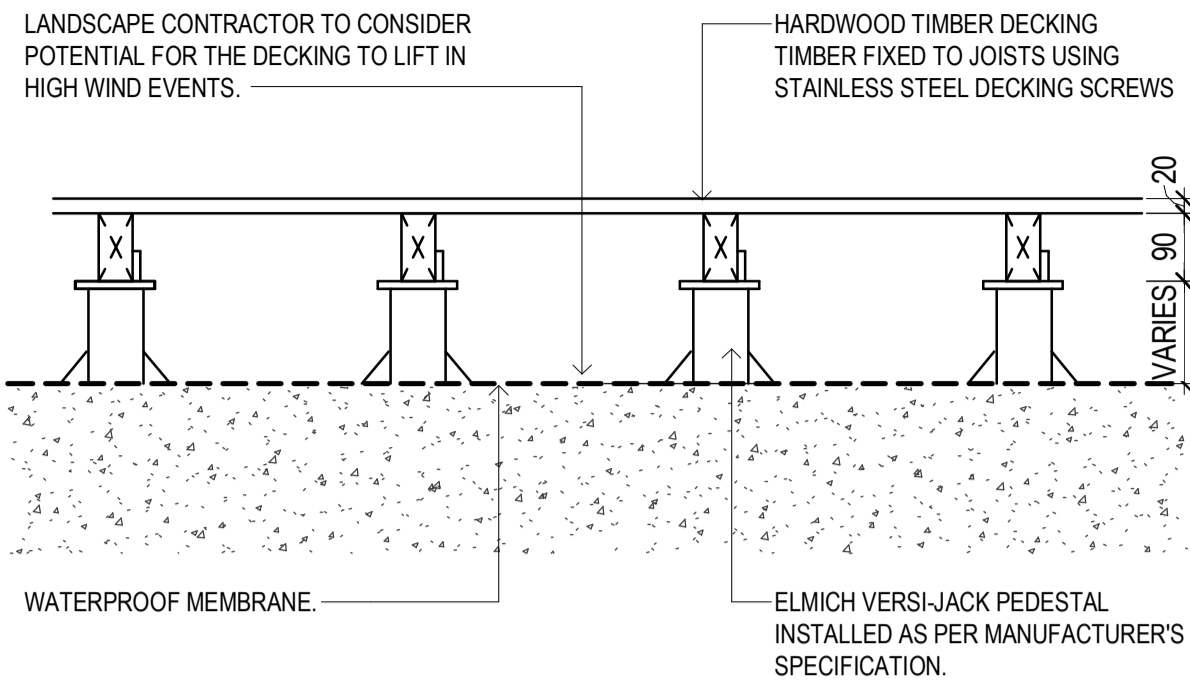
mode **BRISBANE**
Plaza Level, Mosaic
826 Ann St
Fortitude Valley QLD 4006
T +61 7 3253 9900
bne@modedesign.com.au
ABN: 65 112 807 931

| |
|----------------------|
| CLIENT |
| H&F Building Pty Ltd |

| |
|---------------------------------------|
| PROJECT |
| Fire Station Boarding House |
| 3 William Street, Fairfield, 2165 NSW |

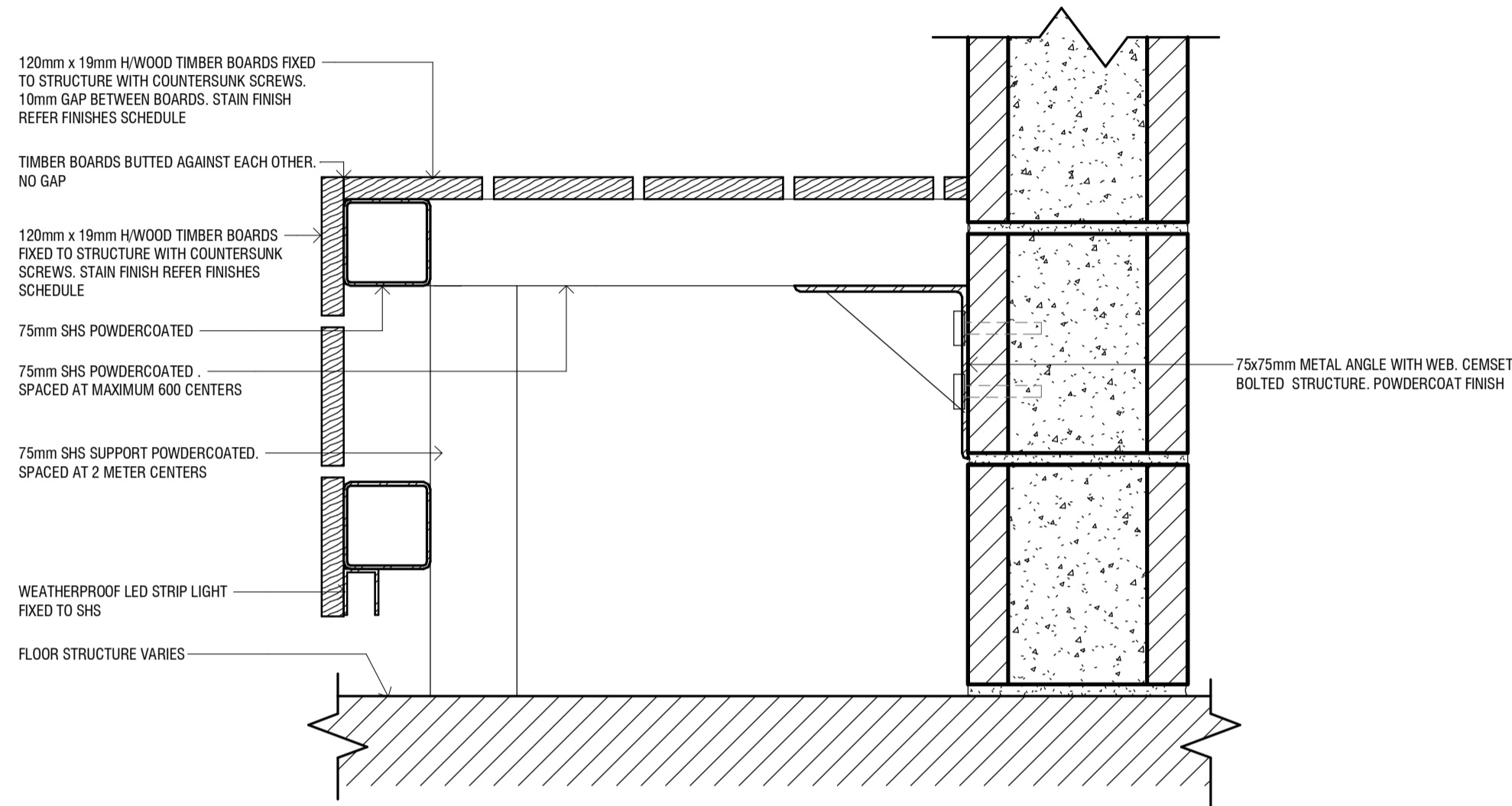
| |
|------------------------------|
| DRAWING TITLE |
| LANDSCAPE DETAILS SHEET 1 |

| | |
|---------------------------------|-----------------------|
| DRAWN GH | CHECKED DB |
| ISSUE 20/12/2019 10:58:43 AM | SCALE As indicated |
| PROJECT No 17411 | STAGE DA |
| DRAWING No LSC- 9000 | REVISION 4 |



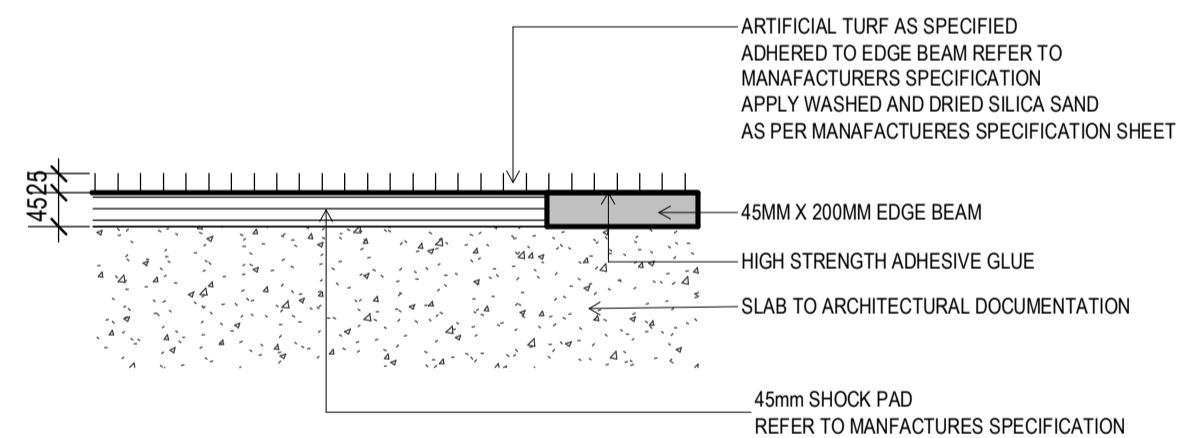
1 TYPICAL DECKING SECTION

SCALE 1 : 10



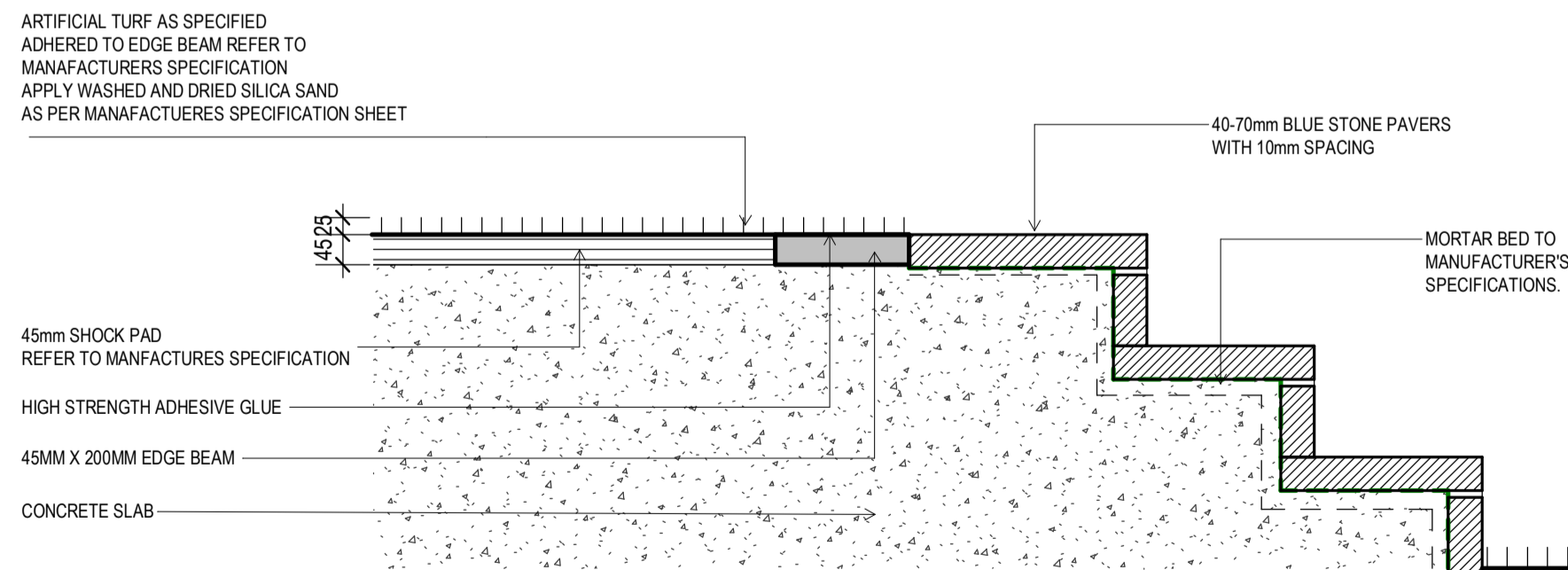
2 TYPICAL TIMBER SEAT DETAIL

SCALE 1 : 5



3 AT1 - ARTIFICIAL TURF DETAIL

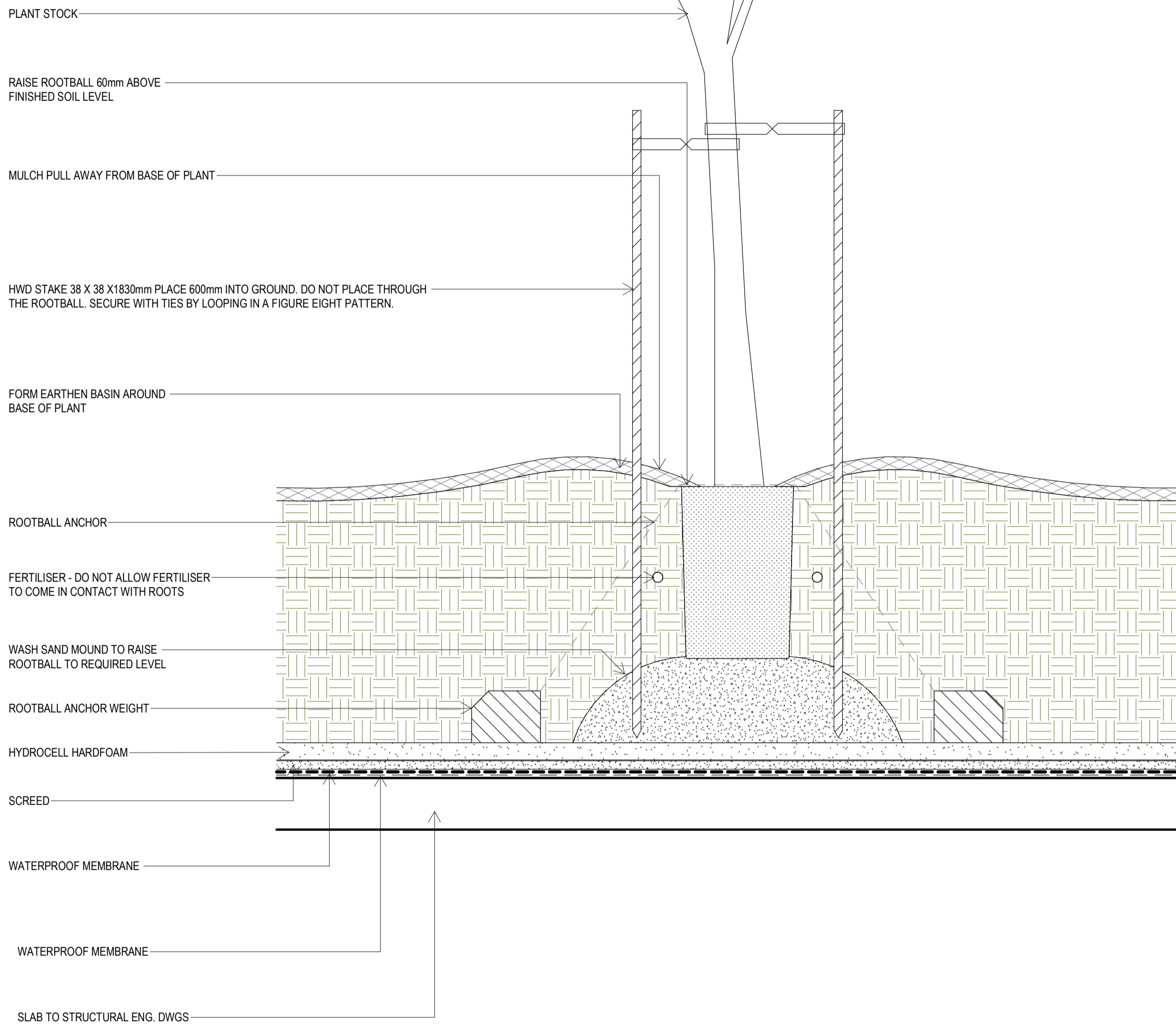
SCALE 1 : 10



4 PT1 - PAVED STAIR DETAIL

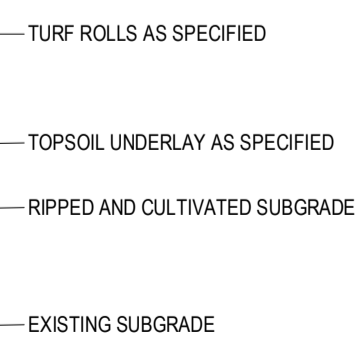
SCALE 1 : 10

- NOTES:
- THOROUGHLY WATER THE ROOTBALL IMMEDIALEY AFTER PLANTING
 - ROOTBALL ANCHOR SYSTEM TO BE INSTALLED AS PER THE MANUFACTURERS INSTRUCTIONS.
 - CULTIVATE SIDE OF EXCAVATEC HOLE WHEN PLANTING ON GROUND
 - NUMBER OF STAKES VARIE WITH POT SIZE REFER PLANTING SCHEDULE.




5 TREE ON PODIUM

SCALE 1 : 20



- These designs and plans are the copyright of MODE DESIGN Corp. Pty Ltd and cannot be reproduced without written permission.
- Verify all dimensions on site prior to commencement of work.
- DO NOT scale off these drawings.
- Report any discrepancies to the architect before carrying out any work.

| AMENDMENTS | | | | |
|------------|-----------------------|------|-----|------------|
| REV | DESCRIPTION | AUTH | CHK | DATE |
| 1 | REVISED DA SUBMISSION | GH | SC | 11/12/2019 |
| | | | | |
| | | | | |
| | | | | |
| | | | | |
| | | | | |

| | | | |
|--|-------------|-------------------------|---------------|
| ISSUE DA SUBMISSION | | NORTH | |
| <div><div></div><div>BRISBANE Plaza Level, Mosaic 826 Ann St Fortitude Valley QLD 4006 T +61 7 3253 9900 bne@modedesign.com.au ABN: 65 112 807 931</div></div> | | | |
| CLIENT H&F Building Pty Ltd | | | |
| PROJECT Fire Station Boarding House | | | |
| 3 William Street, Fairfield, 2165 NSW | | | |
| DRAWING TITLE LANDSCAPE DETAILS SHEET 2 | | | |
| DRAWN GH | | CHECKED DB | |
| ISSUE 20/12/2019 10:58:43 AM | | SCALE As indicated | |
| PROJECT No 17411 | STAGE DA | DRAWING No LSC- 9001 | REVISION 1 |

LANDSCAPE SPECIFICATION NOTES

SPECIFICATION TO BE READ IN CONJUNCTION WITH:

- 17411-DA-LSC-0000 LANDSCAPE COVERSHEET
- 17411-DA-LSC-1000 LANDSCAPE PLAN - GROUND LEVEL
- 17411-DA-LSC-1001 LANDSCAPE PLAN - LEVEL 1
- 17411-DA-LSC-4000 PLANTING PLAN - GROUND LEVEL
- 17411-DA-LSC-4001 PLANTING PLAN - LEVEL 1
- 17411-DA-LSC-9000 LANDSCAPE TYPICAL DETAILS 1
- 17411-DA-LSC-9001 LANDSCAPE SPECIFICATION

SETOUT:

IT IS THE CONTRACTORS RESPONSIBILITY TO ADEQUATELY SETOUT THE LANDSCAPE WORKS AS DOCUMENTED.

DIGITAL BASE AVAILABLE FOR SETOUT BY SURVEYOR, IF REQUIRED.

CONTRACTOR TO USE FIGURED DIMENSIONS WHERE DOCUMENTED. DO NOT SCALE OFF DRAWINGS.

SERVICES:

PRIOR TO COMMENCEMENT ON SITE, THE LANDSCAPE CONTRACTOR IS REQUIRED TO CONFIRM THE TYPE AND LOCATION OF ALL SERVICES IN GROUND AND ABOVE GROUND WITHIN THE SITE. IN THE EVENT OF ANY DAMAGE TO SERVICES, THE LANDSCAPE CONTRACTOR IS TO IMMEDIATELY NOTIFY THE CLIENT/PROJECT MANAGER.

THE LANDSCAPE CONTRACTOR IS RESPONSIBLE FOR TIME AND COSTS ASSOCIATED WITH DAMAGE TO SERVICES CAUSED BY THE LANDSCAPE CONTRACTOR.

STANDARDS:

UNLESS OTHERWISE SPECIFIED AND WHERE APPLICABLE, THE WORK PLACE, MATERIALS AND WORKMANSHIP SHALL BE IN ACCORDANCE WITH THE RELEVANT GOVERNMENT POLICIES, GUIDELINES AND LEGISLATION AND THE STANDARDS OF THE STANDARDS ASSOCIATION OF AUSTRALIA.

WEED ERADICATION:

ERADICATE WEEDS BY ENVIRONMENTALLY ACCEPTABLE METHODS USING A NON-RESIDUAL GLYPHOSATE HERBICIDE IN ANY OF ITS REGISTERED FORMULAE, AT THE RECOMMENDED MAXIMUM RATE. REMOVE ALL VEGETATIVE SPOIL FROM SITE. DO NOT BURN.

CONCRETE:

THE WHOLE OF THE MATERIALS, METHODS AND TECHNIQUES USED IN THE CONSTRUCTION AND SHOWN ON THE APPROPRIATE DRAWINGS SHALL BE CARRIED OUT IN ACCORDANCE WITH THE RELEVANT CURRENT AUSTRALIAN CODES (INCLUDING ALL AMENDMENTS) AS FOLLOWS AND AS WELL AS THE RECOMMENDATIONS OR APPROPRIATE BULLETINS ISSUED BY THE CEMENT AND CONCRETE ASSOCIATION OF AUSTRALIA AND THE RELEVANT BUILDING REGULATIONS.

- AS 1012: METHODS OF TESTING CONCRETE
- AS 1379: SPECIFICATION AND SUPPLY OF CONCRETE
- AS 1478: CHEMICAL ADMIXTURES FOR CONCRETE MORTAR AND GROUT
- AS 3600: CONCRETE STRUCTURES CODE
- AS 3610: FORMWORK FOR CONCRETE
- AS/NZS 4671: STEEL REINFORCING MATERIALS

COARSE AGGREGATE MUST BE FREE FROM DUST AND DELETERIOUS MATTER AND SHALL COMPLY WITH AS 2758 PART 1, AND AS 1141 AND SHALL BE UPGRADED IN ACCORDANCE WITH THE REQUIREMENTS OF THIS CODE FOR 13mm AND 20mm NOMINAL SIZE GRADED AGGREGATES. IRRESPECTIVE OF WHETHER CONCRETE IS MIXED ON SITE OR ELSEWHERE, THE CONTRACTOR SHALL NOMINATE THE SOURCE OF SUPPLY AND MUST SUBMIT TO THE CONSULTING ENGINEERS, THE MEDIAN GRADING CURVES FOR THE TWO SIZES AND ONLY THE PERMISSIBLE DEVIATIONS AS GIVEN IN THE CODE WILL BE ALLOWED.

FINE AGGREGATE SHALL COMPLY WITH AS 1141 AND IRRESPECTIVE OF WHETHER CONCRETE IS MIXED ON SITE OR ELSEWHERE THE CONTRACTOR SHALL NOMINATE THE SOURCE OF SUPPLY AND SUBMIT TO THE CONSULTING ENGINEERS THE MEDIAN GRADING CURVE AND ONLY THE PERMISSIBLE DEVIATIONS GIVEN IN THE CODE WILL BE ALLOWED.

CEMENT SHALL BE ORDINARY PORTLAND CEMENT (TYPE 'A') IN ACCORDANCE WITH AS 2350. ALL CEMENT USED IN THIS CONTRACT SHALL BE OF THE BRAND APPROVED BY THE CONSULTING ENGINEERS.

WATER FOR CEMENT SHALL BE DIRECT FROM THE MAINS AND MUST BE FREE FROM MATTER HARMFUL TO CONCRETE AND REINFORCEMENT. NO ADMIXTURES SHALL BE INCORPORATED IN THE CONCRETE UNLESS APPROVED IN WRITING BY THE CONSULTING ENGINEERS.

THE PROPORTIONS IN WHICH THE CEMENT, FINE THE COARSE AGGREGATE, AND WATER SHALL BE MIXED TOGETHER SHALL BE SUCH THAT THE RESULTANT CONCRETE MUST HAVE A MAXIMUM PRACTICAL DENSITY AND SHALL ATTAIN CHARACTERISTIC COMPRESSIVE STRENGTHS (F_C) AT 28 DAYS AS SPECIFIED IN THE CONTRACT DRAWINGS. THIS CONCRETE SHALL BE PLACED IN THE PROJECT AND SHALL HAVE A MINIMUM CEMENT CONTENT OF 300 KILOGRAMS PER CUBIC METRE. ALL CEMENT CONTENTS ARE TO BE STATED ON ALL DELIVERY DOCKETS RECEIVED FROM THE CONCRETE SUPPLIERS. WHERE CONCRETE IS MIXED OFF THE SITE THE CONTRACTOR SHALL OBTAIN FROM THE CONCRETE SUPPLIER AND FURNISH TO THE DESIGNERS BEFORE CONCRETE IS DELIVERED, A STATEMENT IN WRITING, GUARANTEEING THAT THE CONCRETE SUPPLIED IS IN CONFORMITY WITH THE APPROVED DESIGN MIX AND SHALL ATTAIN A STATED GUARANTEED STRENGTH AT 28 DAYS. THE METHOD OR ORDERING REQUIRES THE CONCRETE SUPPLIER TO ASSUME RESPONSIBILITY FOR THE DESIGN OF THE CONCRETE MIX.

THE CONTRACTOR SHALL CARRY OUT ALL SAMPLING AND TESTING OF CONCRETE AT HIS OWN EXPENSE, WHICH SHALL INCLUDE FOR THE SUPPLY OF ALL LABOUR, MATERIALS, EQUIPMENT AND OTHER NECESSARY ITEMS. THE TESTING OF THE SAMPLES SHALL BE CARRIED OUT IN AN INDEPENDENT ESTABLISHED LABORATORY RECOGNISED BY THE NATIONAL ASSOCIATION OF TESTING LABORATORIES AND APPROVED BY THE CONSULTING ENGINEER.

CONCRETE REPRESENTED BY ONE OR MORE SAMPLES SHALL BE DEEMED TO COMPLY WITH THE REQUIREMENTS FOR COMPRESSIVE STRENGTH WHEN THE TEST STRENGTH OF EACH SAMPLE.

THE CONSULTING ENGINEER MAY, BEFORE PLACEMENT, REJECT ANY BATCH OF CONCRETE WHICH IN HIS OPINION DOES NOT CONFORM WITH THE DESIGN APPROVED THEREFORE, OR IS UNSATISFACTORY IN ANY RESPECT; OR IN THE CASE OF CONCRETE MIXED OFF SITE, IN RESPECT OF WHICH A DELIVERY DOCKET CONTAINING FULL INFORMATION AS SPECIFIED HEREIN, IS NOT IMMEDIATELY AVAILABLE. THE CONSULTING ENGINEER MAY REJECT ANY CONCRETE, WHICH IS POROUS, SEGREGATED, HONEYCOMBED, OR WHICH CONCRETING IS SO INTERRUPTED AS TO REQUIRE A CONSTRUCTION JOINT OR EMBEDDED STEEL HAS BEEN DISTURBED BY VIBRATION AFTER INITIAL SET HAS TAKEN PLACE, OR WHICH IS OTHERWISE DEFECTIVE.

THE CONCRETE SHALL BE MIXED, TRANSPORTED AND PLACED IN ACCORDANCE WITH THE RELEVANT CLAUSES OF AS 3600 EXCEPT THAT THE CONCRETE SHALL, WHERE POSSIBLE AND UNLESS OTHERWISE APPROVED BY THE CONSULTING ENGINEERS, BE COMPACTED BY MEANS OF VIBRATORS AND/OR VIBRATING SCREEDS AS SPECIFIED HEREUNDER. CONCRETE SHALL ONLY BE PLACED IN THE PRESENCE OF THE CONSULTING ENGINEERS OR HIS DULY AUTHORISED REPRESENTATIVE. NO CONCRETE SHALL BE PLACED UNTIL THE EXCAVATION, FORMWORK AND/OR REINFORCING HAS BEEN INSPECTED AND APPROVED BY THE CONSULTING ENGINEER. THE CONTRACTOR SHALL NOTIFY THE CONSULTING ENGINEERS THAT SUCH INSPECTION IS REQUIRED BEFORE 3PM TWO (2) DAYS PRIOR TO THE INTENDED PLACING OF CONCRETE. PRIOR TO COMMENCING PLACING OF CONCRETE, THE CONTACT SURFACES OF ALL APPLIANCES TO BE USED FOR THIS WORK SHALL BE THOROUGHLY CLEANED OF ALL HARDENED CONCRETE AND FOREIGN MATTER. FORMWORK SHALL BE CLEANED OF DEBRIS AND FREE OF WATER. CONCRETE SHALL BE DEPOSITED AS NEAR AS PRACTICABLE TO ITS FINAL POSITION. NO CONCRETE THAT HAS PARTIALLY HARDENED OR HAS BEEN CONTAMINATED BY FOREIGN MATERIALS SHALL BE DEPOSITED IN THE WORK. IF PREMIXED CONCRETE IS USED, THE CONTRACTOR SHALL ORGANISE THE DELIVERY OF CONCRETE TO THE SITE IN SUCH QUANTITIES AS CAN BE SUFFICIENTLY HANDLED BY THE LABOUR AVAILABLE AT THE SITE WITHOUT UNDUE DELAY IN THE DISCHARGING OF CONCRETE FROM THE DELIVERY VEHICLES.

UNLESS OTHERWISE APPROVED BY THE CONSULTING ENGINEERS, CONCRETE SHALL BE COMPACTED BY VIBRATORS AND CONCRETING SHALL NOT COMMENCE UNTIL, IN THE OPINION OF THE CONSULTING ENGINEERS, THE CONTRACTOR HAS SUFFICIENT VIBRATORS, INCLUDE STAND-BY UNITS, AVAILABLE AT SITE. VIBRATORS SHALL BE OF THE INTERNALLY VIBRATED POWER TYPE WITH A FREQUENCY OF NOT LESS THAN FIVE THOUSAND (5,000) VIBRATIONS PER MINUTE OR VIBRATING SCREEDS OF A TYPE OR TYPES APPROVED BY THE CONSULTING ENGINEERS. THE VIBRATORS SHALL BE INSERTED INTO THE CONCRETE CONTINUOUSLY AND PROGRESSIVELY ALONG THE POUR WITH SUFFICIENT TIME AT EACH INSERTION TO THOROUGHLY COMPACT THE CONCRETE. OVER VIBRATION SHALL BE AVOIDED AND VIBRATORS SHALL NOT REMAIN IN ANY ONE POSITION FOR MORE THAN TWENTY (20) SECONDS. VIBRATORS SHALL BE UNIFORMLY SPACED AND NOT FURTHER APART THAN THE RATE BEYOND WHICH VIBRATION IS VISIBLY EFFECTIVE. THEY WILL BE PROVIDED IN SUFFICIENT NUMBERS TO ENSURE COMPACTION AT A RATE SATISFACTORY TO THE CONSULTING ENGINEERS.

CULTIVATION:

CULTIVATE TO A MINIMUM DEPTH OF 200mm BELOW REQUIRED SUBGRADE LEVELS. DO NOT DISTURB SERVICES OR TREE ROOTS; IF NECESSARY CULTIVATE THESE AREAS BY HAND. DURING CULTIVATION, THOROUGHLY MIX IN ANY MATERIALS REQUIRED TO BE INCORPORATED INTO THE SUBSOIL. CULTIVATE MANUALLY WITHIN 300mm OF PATHS OR STRUCTURES. REMOVE STONES OR CLOUDS OF EARTH EXCEEDING 50mm, AND ANY WEEDS, RUBBISH OR OTHER DELETERIOUS MATERIAL BROUGHT TO THE SURFACE DURING CULTIVATION. TRIM THE SURFACE TO THE REQUIRED DESIGN LEVELS AFTER CULTIVATION. ADDITIVES - APPLY ADDITIVES AFTER RIPPING OR CULTIVATION AND INCORPORATE INTO THE UPPER 100mm LAYER OF THE SUBSOIL. "TROPICRO CLAY BREAKER": INCORPORATE AT THE RATE OF 0.25KG/m2 OR 0.5KG PER HOLE.

PLANTING AREAS - TOPSOIL:

SOIL TYPE: REFER TO MATERIALS & FINISHES SCHEDULE.
SOIL DEPTHS: REFER TO MATERIALS & FINISHES SCHEDULE.

CONDITIONERS OR OTHER ADDITIVES TO BE THOROUGHLY MIXED BEFORE PLACING.

TOP DRESSING: COARSE SOIL TO AS 4419, SUITABLE FOR APPLICATION FOR GRASSED AREAS; SPREAD TOPSOIL ON THE PREPARED SUBSOIL AND GRADE EVENLY, MAKING NECESSARY ALLOWANCES TO PERMIT THE FOLLOWING:

- REQUIRED FINISHED LEVELS AND CONTOURS MAY BE ACHIEVED AFTER LIGHT COMPACTION;
- GRASSED AREAS MUST BE FINISHED 20mm BELOW ADJACENT HARDSTAND SURFACES, SUCH AS KERBS, PATHWAYS OR SWALES.

FERTILIZER SCHEDULE:

LOCATION: N:P:K RATIO APPLICATION RATE
ALL PLANTED TREES: 20-10-10 AND TRACE ELEMENTS
GROUND COVER/SHRUBS: 13-5-6-10-8 100 GMS/m2

PRODUCT: OSMOCOTE PLUS 8 - 9 MONTHS

PLANTING:

EXCAVATE PLANTING HOLES USING A BACKHOE OR SIMILAR MACHINE TO DEPTHS SHOWN ON THE DRAWINGS. BREAK UP THE BASE OF THE HOLE A FURTHER 100mm AND LOOSEN COMPACTED SIDES OF THE HOLE TO PREVENT CONFINEMENT OF ROOT GROWTH. EXCAVATE A HOLE TO TWICE THE DIAMETER OF THE ROOT BALL AND AT LEAST 200mm DEEPER THAN THE ROOT BALL.

USE PLANTS WITH THE FOLLOWING CHARACTERISTICS:

- LARGE HEALTHY ROOT SYSTEMS, WITH NO EVIDENCE OF ROOT CURL, RESTRICTION OR DAMAGE.
- VIGOROUS, WELL ESTABLISHED, FREE FROM DISEASE AND PESTS, OF GOOD FORM CONSISTENT WITH THE SPECIES OR VARIETY.
- HARDENED OFF, NOT SOFT OR FORCED, AND SUITABLE FOR PLANTING IN THE NATURAL CLIMATIC CONDITIONS PREVAILING AT THE SITE.

TREES:

USE TREES WHICH, UNLESS REQUIRED TO BE MULTI-STEMMED, HAVE A SINGLE LEADING SHOOT. DELIVER PLANT MATERIAL TO THE SITE ON A DAY TO DAY BASIS, AND PLANT IMMEDIATELY AFTER DELIVERY. DO NOT VARY THE PLANT LOCATIONS FROM THOSE SHOWN ON THE DRAWINGS. IF IT APPEARS NECESSARY TO VARY THE LOCATIONS AND SPACING TO AVOID SERVICE LINES, OR TO COVER THE AREA UNIFORMLY, OR FOR OTHER REASONS, APPLY FOR INSTRUCTIONS FROM THE LANDSCAPE ARCHITECT. DO NOT PLANT IN UNSUITABLE WEATHER CONDITIONS SUCH AS EXTREME HEAT, COLD, WIND OR RAIN. IN OTHER THAN SANDY SOILS, SUSPEND EXCAVATION WHEN THE SOIL IS WET, OR DURING FROST PERIODS. THOROUGHLY WATER THE PLANTS BEFORE PLANTING, IMMEDIATELY AFTER PLANTING, AND AS REQUIRED TO MAINTAIN GROWTH RATES FREE OF STRESS.

REMOVE THE PLANT FROM THE CONTAINER WITH MINIMUM DISTURBANCE TO THE ROOT BALL, ENSURE THAT THE ROOT BALL IS MOIST AND PLACE IT IN ITS FINAL POSITION, IN THE CENTRE OF THE HOLE AND PLUMB, AND WITH THE TOP SOIL LEVEL OF THE PLANT ROOT BALL LEVEL WITH THE FINISHED SURFACE OF THE SURROUNDING SOIL.

FERTILIZE ALL PLANTING IN ACCORDANCE WITH THE FERTILIZER SCHEDULE.

BACKFILL WITH TOPSOIL MIXTURE. LIGHTLY TAMP AND WATER TO ELIMINATE AIR POCKETS. ENSURE THAT TOPSOIL IS NOT PLACED OVER THE TOP OF THE ROOT BALL, SO THAT THE PLANT STEM REMAINS THE SAME HEIGHT ABOVE GROUND AS IT WAS IN THE CONTAINER.

MULCH:

MULCH TYPE: REFER TO MATERIALS & FINISHES SCHEDULE.
USE ORGANIC MULCH WHICH IS FREE OF DELETERIOUS AND EXTRANEOUS MATTER SUCH AS SOIL, WEEDS AND STICKS.
PLACE MULCH CLEAR OF PLANT STEMS, AND RAKE TO AN EVEN SURFACE FLUSH WITH THE SURROUNDING FINISHED LEVELS.

ESTABLISHMENT PERIOD:

THE ESTABLISHMENT PERIOD FOR THE PROJECT WILL COMMENCE FROM THE DATE OF PRACTICAL COMPLETION. THIS ESTABLISHMENT PERIOD WILL CONTINUE FOR A MINIMUM OF TWELVE (12) WEEKS. DURING THIS PERIOD, THE CONTRACTOR IS REQUIRED TO UNDERTAKE THE FOLLOWINGS TASKS:

- FERTILIZING AND TREATMENT OF TURF AND PLANTS FOR ANY PESTS OR DISEASES THAT MAY INHIBIT CONTINUED HEALTHY GROWTH.
- WATERING OF ALL GARDEN BEDS AND PLANTED LANDSCAPE AREAS. MINIMUM THREE (3) COMPLETE WATERINGS, SOAKING TO A DEPTH OF 150 MM FOR TURF AND 300MM FOR PLANTING, AT FORTNIGHTLY INTERVALS FOR THE ESTABLISHMENT PERIOD IRRESPECTIVE OF NATURAL RAINFALL. CONFIRM SOAKED DEPTH AND RECORD IN THE LOG BOOK.
- ENSURE THE SUCCESSFUL ESTABLISHMENT OF PLANTING, THROUGH THE REPLACEMENT OF PLANTS WHICH HAVE FAILED OR BEEN DAMAGED. THIS INCLUDES ANY PLANTS WHICH HAVE BEEN DAMAGED BY FROST OR LOST THROUGH THEFT DURING THE ESTABLISHMENT PERIOD. ALL DAMAGED, STOLEN OR UNHEALTHY PLANTS ARE TO BE REPLACED WITH THOSE SAME SPECIES AND SIZES OUTLINED IN THE PLANT SCHEDULE.
- GENERAL MAINTENANCE INCLUDING, BUT NOT LIMITED TO, WEEDING, MOWING, ADJUSTMENT OF TREES STAKES AND TIES, AS WELL AS ENSURING TIDY AND RUBBISH FREE SITE. MINIMUM SOIL AND MULCH DEPTHS ARE TO BE MAINTAINED AT ALL TIMES DURING THE ESTABLISHMENT PERIOD.
- ALL TURFED HAVE A MINIMUM OF 100% COVERAGE AT 'ON MAINTENANCE' INSPECTION.

MAINTENANCE PERIOD:

THE MAINTENANCE PERIOD WILL COMMENCE ON COMPLETION OF THE ESTABLISHMENT PERIOD, TWELVE WEEKS AFTER PRACTICAL COMPLETION HAS BEEN


ACHIEVED. THE 'ON MAINTENANCE' PERIOD WILL CONTINUE FOR THE DURATION OF 52 WEEKS OR AT WHICH POINT A LETTER OF ACCEPTANCE HAS BEEN PRODUCED BEYOND THIS POINT. DURING THE 'ON MAINTENANCE' PERIOD, THE CONTRACTOR IS REQUIRED TO UNDERTAKE THE FOLLOWING TASKS:

- FERTILIZING AND TREATMENT OF TURF AND PLANTS FOR ANY PESTS OR DISEASES THAT MAY INHIBIT CONTINUED HEALTHY GROWTH.
- WATERING OF ALL GARDEN BEDS AND PLANTED LANDSCAPE AREAS IN INSTANCES OF REDUCED NATURAL RAINFALL. ENSURE THE SUCCESSFUL ESTABLISHMENT OF PLANTING, THROUGH THE REPLACEMENT OF PLANTS WHICH HAVE FAILED OR BEEN DAMAGED. THIS INCLUDES ANY PLANTS WHICH HAVE BEEN DAMAGED BY FROST OR LOST THROUGH THEFT DURING THE ON MAINTENANCE PERIOD, AS PER THE PLANT COMPLIANCE DURING ON MAINTENANCE PERIOD TABLE.
- TREE PRUNING IS TO BE CARRIED OUT AS NECESSARY TO ENSURE THE FORMATION OF A CLEAN TRUNK AND LATERAL BRANCHING NO LOWER THAN 1200MM HEIGHT FOR THE DESIRED FORM TO BE ACHIEVED. THIS IS TO BE APPLIED TO ALL SPECIES LISTED ON THE PLANTING SCHEDULE.
- GENERAL MAINTENANCE INCLUDING, BUT NOT LIMITED TO, WEEDING, MOWING, ADJUSTMENT OF TREES STAKES AND TIES, AS WELL AS ENSURING TIDY AND RUBBISH FREE SITE. MINIMUM SOIL AND MULCH DEPTHS ARE TO BE MAINTAINED AT ALL TIMES DURING THE ESTABLISHMENT PERIOD.
- ALL TURFED HAVE A MINIMUM OF 95% COVERAGE AT 'ON MAINTENANCE' INSPECTION.

- These designs and plans are the copyright of MODE DESIGN Corp. Pty Ltd and cannot be reproduced without written permission.
- Verify all dimensions on site prior to commencement of work.
- DO NOT scale off these drawings.
- Report any discrepancies to the architect before carrying out any work.

| AMENDMENTS | | | | |
|------------|-----------------------|------|-----|------------|
| REV | DESCRIPTION | AUTH | CHK | DATE |
| 1 | FOR REVIEW | DB | LC | 27/07/2018 |
| 2 | DA SUBMISSION | DB | LC | 06/08/2018 |
| 3 | REVISED DA SUBMISSION | DB | LC | 15/04/2019 |
| 4 | REVISED DA SUBMISSION | GH | SC | 11/12/2019 |
| | | | | |
| | | | | |

| | |
|---------------|-------|
| ISSUE | NORTH |
| DA SUBMISSION | |



BRISBANE
Plaza Level, Mosaic
826 Ann St
Fortitude Valley QLD 4006
T +61 7 3846 0877
info@modedesign.com.au
06 11 12 66993

| |
|----------------------|
| CLIENT |
| H&F Building Pty Ltd |

| |
|---|
| PROJECT |
| Fire Station Boarding House 3 William Street, Fairfield, 2165 NSW |

| |
|----------------------------|
| DRAWING TITLE |
| LANDSCAPE SPECIFICATION |

| | | | |
|-------------------------|-------------|-------------------------|---------------|
| DRAWN GH | | CHECKED DB | |
| FIRST ISSUE 04/24/18 | | SCALE @ A1 | |
| PROJECT No 17411 | STAGE DA | DRAWING No LSC- 9002 | REVISION 4 |